

MagCore® Nudeic Acid Extraction Kits

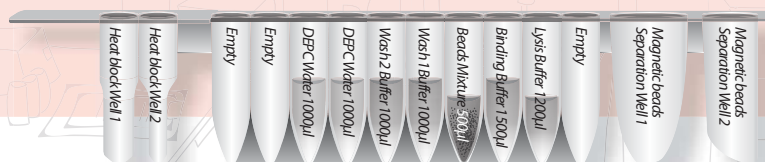


For extraction of free circulating DNA from human plasma or serum

MagCore® Plasma DNA Extraction Kit is designed for purifying free circulating DNA from human serum or plasma using MagCore® automated extraction systems. The kit contains all required reagents and labware for automated purification based on magnetic-particle technology. Reagents necessary for a complete process are supplied and pre-filled in the cartridges, which can be easily loaded into the MagCore® instrument.

105

MagCore® Plasma DNA Extraction Kit (1.2 ml)



Features

1. High performance of purified DNA in downstream applications such as qPCR.
2. Efficient recovery of fragmented DNA
3. Pre-filled and sealed buffer cartridges prevent contamination.
4. No phenol or chloroform extraction
5. Efficient removal of contaminants and inhibitors.

Applications

The MagCore® Plasma DNA Extraction Kit efficiently purifies free circulating DNA.

Sample types include:

1. Human plasma
2. Human serum

High quality DNA available for various downstream applications, including:

1. PCR and real-time PCR
2. Next Generation Sequencing (NGS)

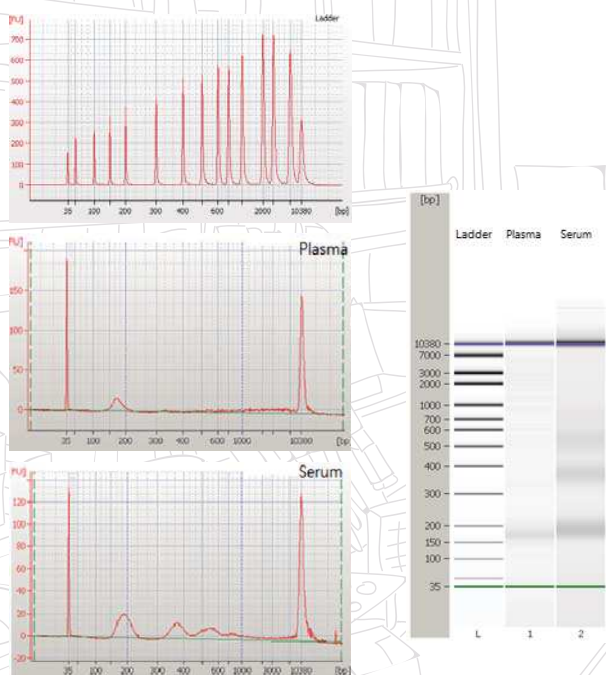


Performance

High-quality of free DNA from plasma and serum

Quality and quantity analysis of the free DNA by Agilent Bioanalyzer 2100. Superior quality DNA are available from plasma and serum samples by using MagCore® products.

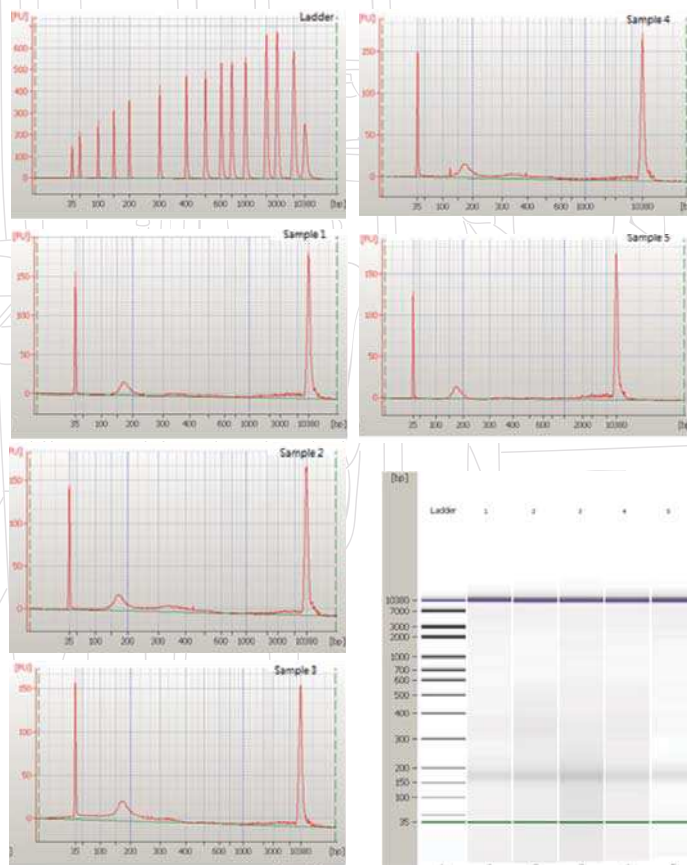
Sample ID	Sample type	Target Conc. (pg/μl)	35 bp marker Conc. (pg/μl)	10380 bp marker Conc. (pg/μl)
1	Human plasma	77.94	125	75
2	Human serum	138.48	125	75



High stability of free DNA

Quality and quantity analysis of the free DNA by Agilent 2100 Bioanalyzer. It is shown by the evidence that free DNA of high quality and stability is possible to extract from 5 different plasma samples by using MagCore® products.

Sample ID	Sample type	Target Conc. (pg/μl)	35 bp marker conc. (pg/μl)	10380 bp marker Conc. (pg/μl)
1	Human plasma	65.95	125	75
2	Human plasma	76.63	125	75
3	Human plasma	87.22	125	75
4	Human plasma	57.96	125	75
5	Human plasma	60.53	125	75



MagCore® Automated Nucleic Acid Kits Specification

MagCore® Super/HF16 Plus/Plus II					MagCore® HF16/Compact/HF48			
Cartridge Code	Cat No.	Cat No.	Cat No.	Running Time	Cat No.	Cat No.	Cat No.	Running Time
	36 preps	72preps	96preps		36 preps	72preps	96preps	
<div>105</div> <div>MagCore® Plasma DNA Extraction Kit (1.2 ml)</div> <div>For 1200µl sample volumes.</div> <div>Contents: Pre-Filled Cartridges, Proteinase K, PK Storage Buffer, Disposable Tip & Holder Sets, Sample Tubes, Elution Tubes</div> <div>Shelf life: 18 months</div>								
		MPD1200	74 min (sample volume:1200 µl) *optical detection is not provided			MPD1200	70 min (sample volume:1200 µl)	

Enzyme Selection Guide

Product	Contents	Cat.No.
Proteinase K Set	11 mg Proteinase K, 1.25 ml PK Storage Buffer	PK011
RNase A	50 μl RNase A (50 mg/ml)	RN050
	130 μl RNase A (50 mg/ml)	RN130



FDA (10055336) registered and CE-IVD certified (Instruments & Reagents)
Manufactured in accordance with quality system requirements that comply with ISO 13485 standards and QSR

RBC Bioscience Corp.
www.rbcbioscience.com
info@rbcbioscience.com